

DOUBLE-WALL TANKS



KEFCO's revolutionary Double Containment System is designed to alleviate the ever-changing environmental and safety concerns regarding bulk chemical storage and containment for the 21st century. Call 800-457-0440.

KEFCO's unique tank-in-a-tank design enables users and specifiers to incorporate advanced performance and safety features on a bulk-handling system, which provides total containment protection. KEFCO's double-wall construction is completely enclosed so that external matter, such as dust, rain and snow is prevented from collecting in the outer containment tank.

Besides delivering unparalleled performance benefits, KEFCO's Doublewall Systems also contribute to your company's bottom line by significantly reducing installation and procurement cost. Most assemblies can be shipped fully-assembled on either a standard or wide-load flatbed trailer, which reduces comparable costs by an average of 35 percent. Visit KEFCO on the www [Click Here!].

Part No.	Gallons	Diameter	Height	Manway /Fill Diameter
5040—	550	76"	65"	18"
5470—	1,100	76"	104"	18"
5490—	1,550	76"	136"	18"
5570—	2,000	102"	103"	18"
5580—	2,500	102"	122"	18"
5590—	3,000	102"	142"	18"
5600—	3,500	102"	158"	18"
5610—	4,000	102"	178"	18"
5620—	4,500	102"	197"	18"
5630—	5,000	102"	216"	18"
5660—	5,500	120"	172"	18"
5670—	6,500	120"	199"	18"

U-vent Assemblies are available in a variety of sizes to relieve vacuum pressures.

Flanged Outlets and other fitting designs can be securely fastened and sealed to many of the large flat areas located on the top section of the tank. (optional)

OSHA-Approved Ladders are available with and without cages in fiberglass and steel construction.

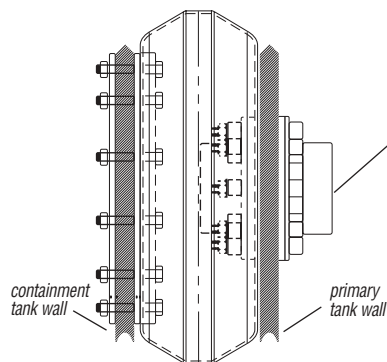
Top Lifting Eyelets make tank unloading and site handling easier and safer.

Fill and/or Draw Pipe Assemblies can be installed to facilitate different material loading or unloading requirements. (optional)

Bolted and Threaded Manways are available in sizes up to 24". Standard size is an 18" threaded manway.

U.F.O. (Unified Fitting Outlet) is uniquely designed to mechanically seal fitting outlet through both the inner and outer tank walls. Material unloading is easier and more cost effective than pumping contents from the top of the tank. (optional)

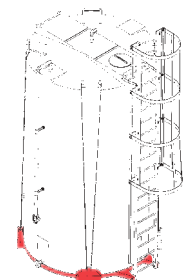
Molded-In Tie-Down Lugs interface with optional cable restraint system to meet seismic zone 4 requirements.



Sectional Side View

Double Wall Tank Construction encloses and interlocks outer and inner tank to prevent rain, snow, and debris from entering outer containment tank.

Outer Containment Tank provides 115-120% of inner tanks capacity for added safety factor. Complies with 40 CFR-264.193.



Tank-Saver Platform System adds mobility and versatility, and can extend tank life. Available on 102" tanks.

DOUBLE-WALL TANKS



KEFCO's smaller dual containment tanks provide added safety and environmental protection in more confined or remote storage locations. The advanced double-wall tank design is enclosed to prohibit foreign matter from entering the secondary containment tank, and a unique octagonal shape provides optimal spacing and sealing surface for the industry's most reliable transition fitting. Call 800-457-0440.

DUAL CONTAINMENTS – MINI BULK

Part No.	Style	Gallons	Diameter	Height	Manway/Fill Diameter
October 2003-TBD	DCT	30	18"	30"	TBD
October 2003-TBD	DCT	55	26"	37"	TBD
5980—	DCT	120	33"	49"	14"
October 2003-TBD	DCT	150	33"	57"	TBD
October 2003-TBD	DCT	275	47"	53"	TBD
October 2003-TBD	DCT	360	53"	53"	TBD
October 2003-TBD	DCT	500	53"	71"	TBD

Enclosed Double Wall Tank prevents foreign matter from entering outer containment tank.

Top Draw-Tube Assembly enables material contents to be safely dispensed from the top of the tank. (optional)

2" Vent provides vacuum relief for interior tank. (optional)

Available in XLPE and HDLPE resin packages.

Transition Fitting allows side safe installation and long-term sealing power through both walls of your dual containment tank. (optional)



Primary Tank is available in both closed and open top tank designs.

Large Flat Surface Area provides ample space for a variety of fitting sizes and styles.

Two Tanks within one design provide double wall protection.

Rib Reinforced Flat Top Design provides ample surface space for chemical feed pump mounting.

Narrow Diameter provides location versatility in that it can fit through most any doorway.

Secondary Containment Tank provides 120% of inner tank's capacity. Complies with CFR-264.193.

All Other Industrial Product Fittings and accessories are available wherever applicable.

